



Green Acres Single Hill, Bath, BA2 8NA

£1,850,000









# Green Acres, Single Hill, Bath, BA2 8LZ

Tucked away at the end of a private lane, a mere stone's throw from the enchanting UNESCO World Heritage city of Bath (5 Miles\*), this property offers seamless access to urban amenities while ensuring a peaceful and private retreat from the hustle and bustle. Its prime location also provides access to renowned schools, the exclusive Babington House(5 Miles), and vibrant Somerset towns such as Frome (9 miles\*) and Bruton (19.4 miles\*), along with convenient access to Bristol Airport (18 miles). \*\*\*Please See Video Tour\*\*\*.

Greenacres - This delightful family home comprises six bedrooms and three bathrooms, including a luxurious en-suite to the master bedroom and a large ground-floor bedroom/studio adjacent to the ground-floor bathroom, complete with a kitchenette and access to it's own separate entrance providing independent accommodation for relatives or grown up children or a possible Airbnb income stream.

A dedicated home cinema/games room beckons entertainment enthusiasts, while the heated swimming pool and expansive outdoor dining areas set the stage for memorable gatherings. The generous dining/reception room exudes warmth and hospitality, ideal for hosting guests or simply embracing a leisurely lifestyle.

The property's allure is undeniable, captivating its current owners with its unequalled private location, serene ambience, and breathtaking views across the valley. The open-plan kitchen/dining/lounge area invites natural light to dance through the rooms, creating an inviting space that seamlessly blends indoor comfort with outdoor splendour. The current owners write; 'Living here evokes the sensation of residing in a luxurious five-star resort, where evenings are spent swimming under the stars, indulging in delicious meals al fresco, and harvesting fresh fruits and herbs, nurturing both body and soul'.

In summary, Green Acres epitomises a timeless retreat where modern comforts, tranquillity, and convenience converge, offering an extraordinary lifestyle in a truly picturesque setting.

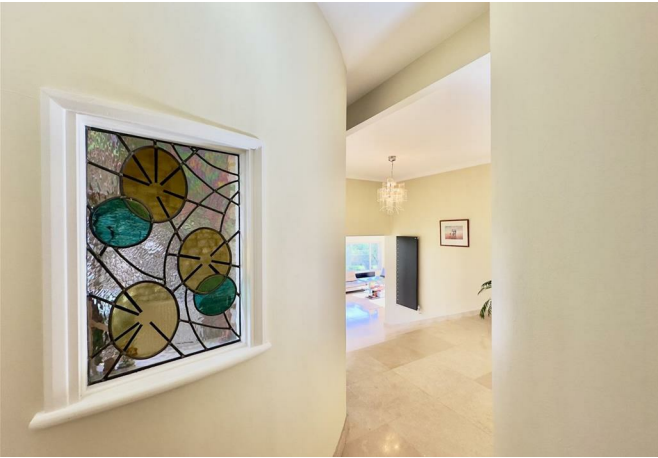
The meticulously landscaped garden serves as a sanctuary for socialising, relaxation, and recreation, featuring distinct areas for various activities. The enchanting flower garden delights the senses with its diverse array of fragrant blooms, including roses, lilies, and lavender, creating an unforgettable sensory experience.

For utmost privacy and relaxation, the secluded swimming pool area is enveloped by lush foliage, providing an idyllic setting for poolside cocktails and enjoyable BBQ evenings.

The village of Shoscombe embodies a vibrant sense of community, anchored by its esteemed primary school and sociable Village Hall, fostering connections and camaraderie among its residents.

Moreover, the surrounding area boasts access to reputable state schools and prestigious independent institutions in Bath, such as Kingswood, King Edward's, Prior Park College, Monkton Combe, and Royal High. The City of Bath itself provides a full range of retail outlets and many other amenities, including the Thermae Spa, Theatre Royal, Cinema Complex, and excellent sports facilities. It also has the benefit of a mainline railway station (Bath Spa) providing direct access to London Paddington (1 hour 25 mins).

£1,850,000





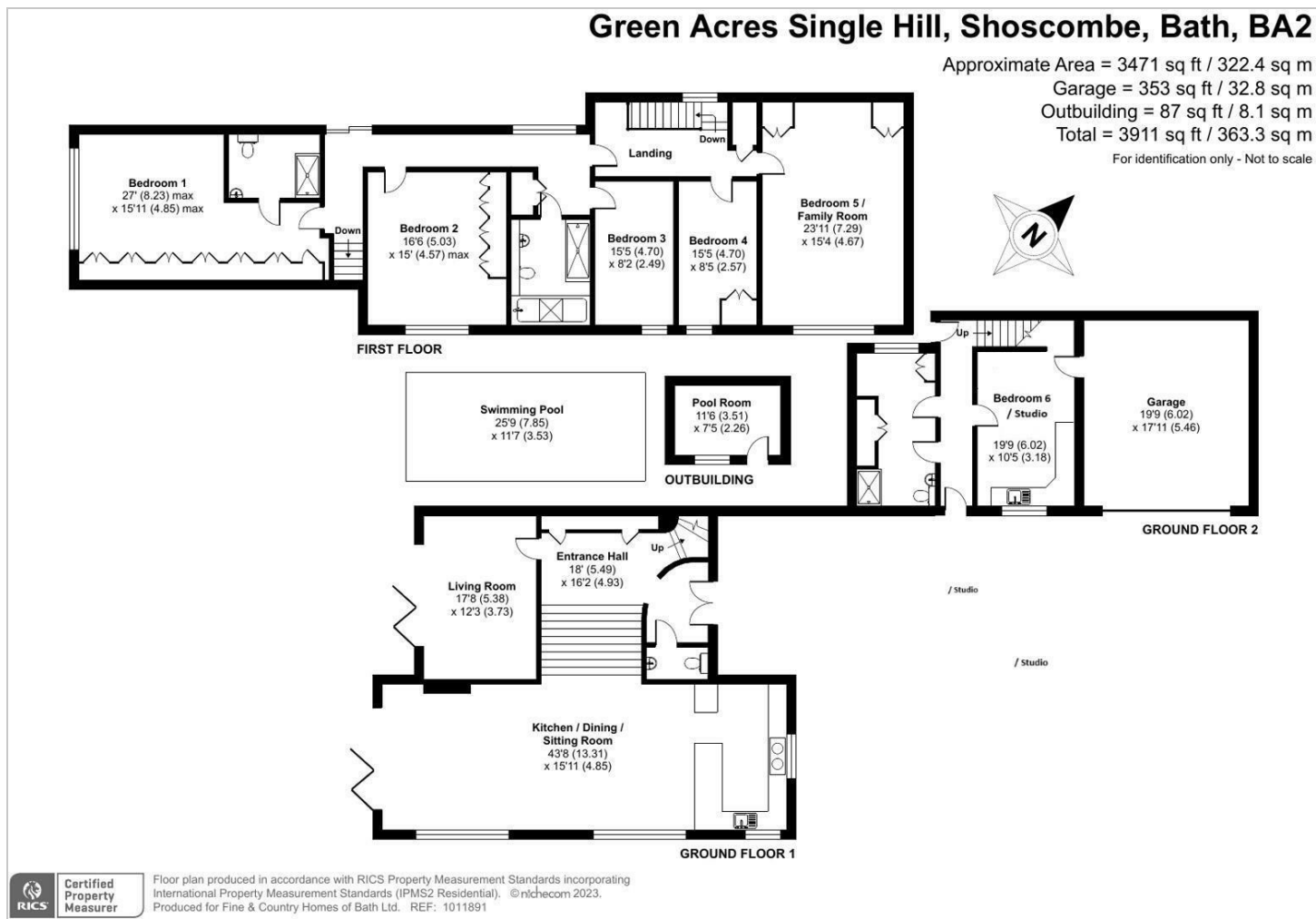








## Floor Plans

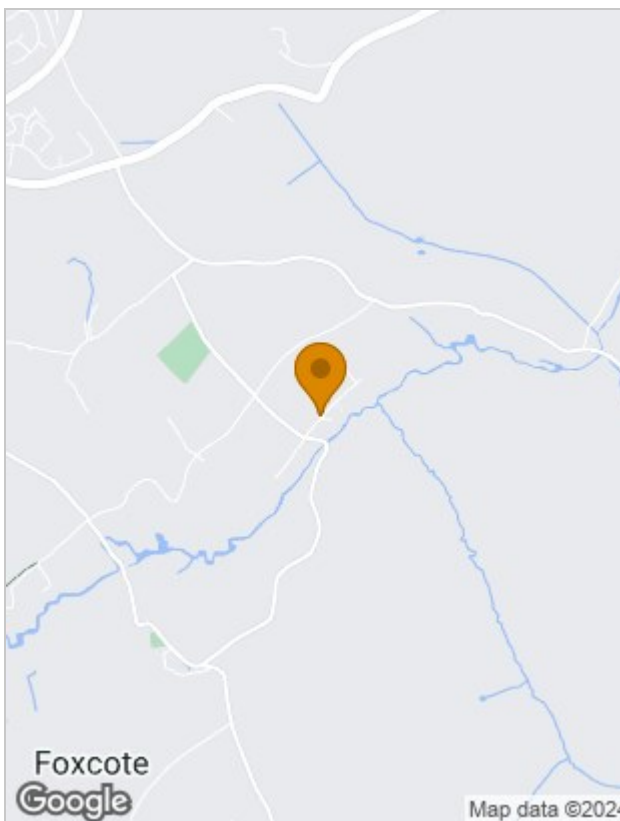


## Viewing

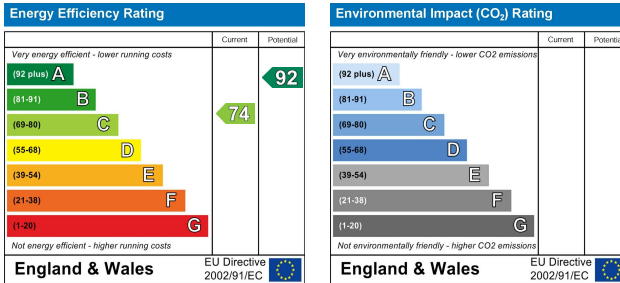
Please contact our Rivendell Estates Office on 01373 489 888 if you wish to arrange a viewing appointment for this property or require further information.

The particulars are set out as a general outline only for the guidance of intended purchasers or lessees, and do not constitute, any part of a contract. Nothing in these particulars shall be deemed to be a statement that the property is in good structural condition or otherwise nor that any of the services, appliances, equipment or facilities are in good working order. Purchasers should satisfy themselves of this prior to purchasing.

## Location Map



## Energy Performance Graph



**Rivendell Estates Frome Business Park, Manor Road, Somerset, BA11 4FN**  
**Tel: 01373 489 888 Email: [info@rivendell-estates.co.uk](mailto:info@rivendell-estates.co.uk) <https://www.rivendell-estates.co.uk>**